

# Stylish doors with unique designs

## Steel doors

Whether you prefer the timelessness of the Classic Collection, the heightened refinement of the Prestige Collection, the trendy contemporary look of the Design Collection or the beloved craftsman simplicity of the Shaker Collection, you are sure to find the ideal door for your home's architecture in one of our four unique collections.




To match your Vog entry door to your garage door, visit [garaga.com/vog](https://garaga.com/vog)  
Details on page 112.



Mundo

Left: Vog steel door p.15. Azur 13 7/8" x 79" sidelites p.39.

Above: Mundo steel door p.13.

 Benjamin Moore, Bull's Eye Red 2002-20

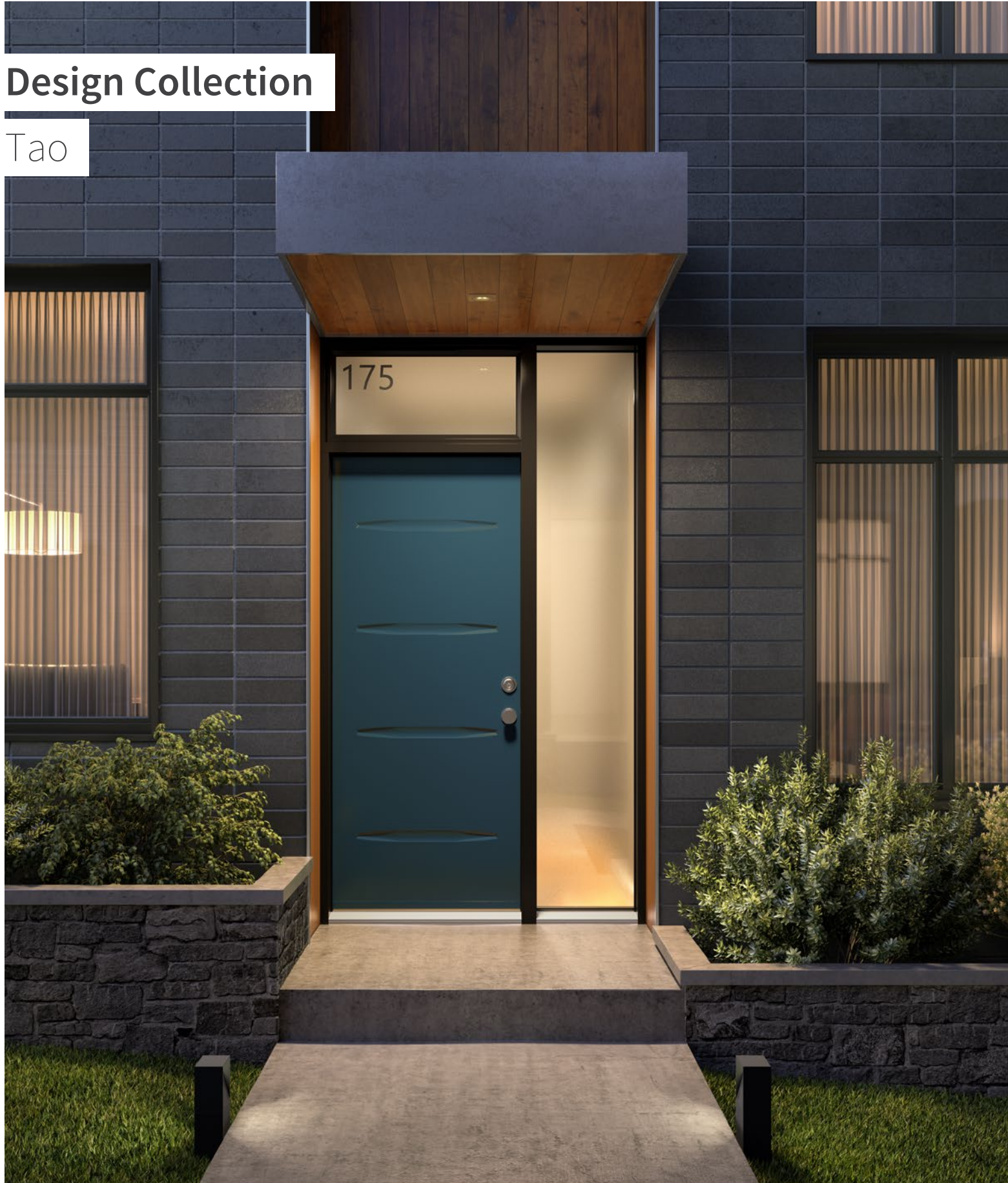


The Mundo entry door is a perfect match to the Moderno garage door by Garaga. Visit [garaga.com/moderno](http://garaga.com/moderno) Details on 112.



# Design Collection

Tao



Tao steel door p.15. Satin finish glass sidelite and transom.

NEW



## Tao

This door's horizontal lines feature gentle organic curves that add movement to the otherwise smooth surface of the steel. The result is a sophisticated door that is both bold and minimalist – two of the core tenets of contemporary style.

### Dimensions

- 33¾", 35¾" × 79"
- 33¾", 35¾" × 84"
- 33¾", 35¾" × 95"



79" Door

95" Door

### Tao Embossment

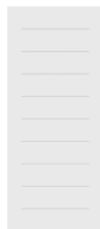


## Mundo

The Mundo door reveals its character through its nine simple horizontal lines.

### Dimensions

- 33¾", 35¾" × 79"
- 33¾", 35¾" × 84"



79" Door

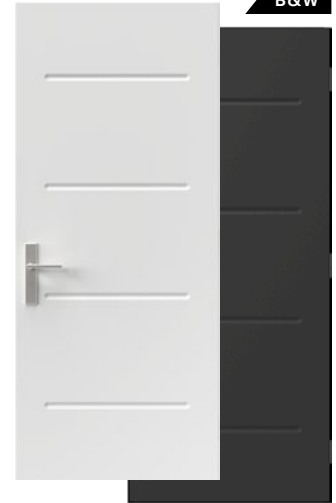
The Mundo entry door is a perfect match to the Moderno garage door by Garaga. Visit [garaga.com/moderno](http://garaga.com/moderno) Details on 112.



### Mundo Embossment



B&W



## Vog

Horizontal lines and angular embossed details provide a graceful and simple style. Dare to finish your door in an eye-catching colour that will give your home its very own signature look.

### Dimensions

- 33¾", 35¾" × 79"
- 33¾", 35¾" × 84"
- 33¾", 35¾" × 95"



79" Door

95" Door

To match your Vog entry door to your garage door, visit [garaga.com/vog](http://garaga.com/vog) Details on 112.



### Vog Embossment







Era

Era steel doors p.17 with Decorative Accents p.18 and Satin finish glass 7"×64".



Oso

Oso steel door with Oso Doorglass 7"×64" p.17. Clear glass transom.

# Asymmetrical Design

NEW

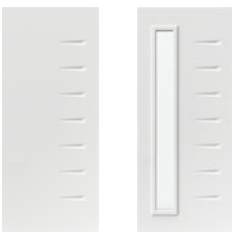


## Era

The new Era door is in perfect harmony with this style's many assets: simplicity, asymmetry, and geometry. Era's asymmetrical composition is designed to leave room for a pull bar or a 7" x 64" doorlite.

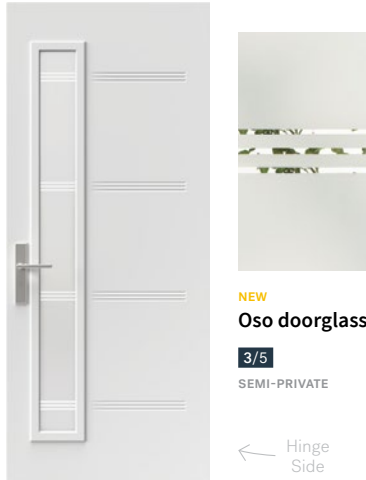
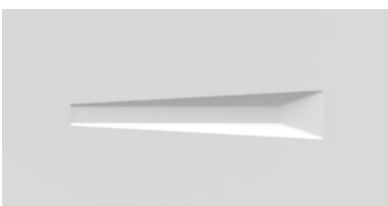
**Suggested frame profile**  
Contemporary

**Dimensions**  
31 3/4", 33 3/4", 35 3/4" x 79"  
33 3/4", 35 3/4" x 84"



79" Door      79" Door  
7" x 64" doorlite

### Era Embossment



## Oso

Discreet lines and complex embossments add up to give Oso its refined and unique style. The asymmetrical design allows for the integration of a doorlite — ideal solution for narrow entryways — or a pull bar for added elegance.

**Suggested frame profile**  
Contemporary

**Dimensions**  
33 3/4", 35 3/4" x 79"



79" Door      79" Door      13 7/8" x 79"  
7" x 64" Oso doorglass  
Oso doorglass (07-382-211-001)  
(07-382-005-002)

### Oso Embossment



## Linea

Linea's strong embossments give it a post-industrial look. This model is specifically designed to integrate a doorlite or a pull bar making Linea the ideal solution for narrow entryways.

**Suggested frame profile**  
Contemporary

**Dimensions**  
31 3/4", 33 3/4", 35 3/4" x 79"



79" Door      79" Door  
7" x 64" doorlite

### Linea Embossment



# Decorative Accents

Unique and in style, Decorative Accents are a bold addition to our contemporary doors.

Get creative! — our new models allow for many different configurations.

## Improved Design & Quality!


- Alunox offers the look of brushed stainless steel with all of the advantages of aluminum: no corrosion, oxydation, or fingerprints
- Improved design with a beveled contour
- Many new models to customize Design Collection doors



Uno 2 Accents <sup>NEW</sup>



Vog 2 Accents <sup>NEW</sup>



Vog 1 Accents

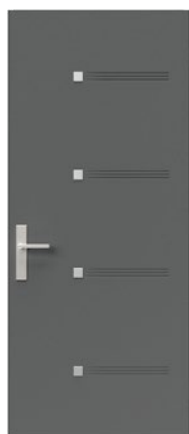




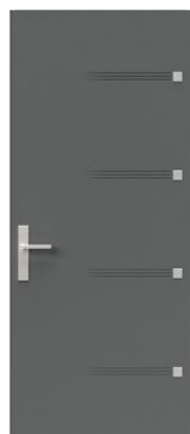
**Mundo 1**  
Kit of 9,  
5/16" x 24"



**Era 1**  
Kit of 7,  
3/4" x 8"



**Oso 1**  
Configuration 1  
Kit of 4,  
2" x 2"



**Oso 1**  
Configuration 2  
Kit of 4,  
2" x 2"



**Oso 2**  
Kit of 4,  
2" x 13" + 2" x 3"



**Vog 1**  
Kit of 4,  
1 1/8" x 4"



**Vog 2**  
Kit of 4,  
5/16" x 24"



**Uno 1**  
Configuration 1  
Kit of 4,  
5/16" x 26"



**Uno 1**  
Configuration 2  
Kit of 4,  
5/16" x 26"



**Uno 2**  
Kit of 5,  
5/16" x 32"